



 Saffron





# Saffron

Saffron is located at Shivaji Park in a quiet neighborhood in Dadar West, away from noise and crowds. Our Vastu-compliant design maximizes daylight and ventilation. We constantly use new and high-quality building materials, innovative to the construction industry to reduce our carbon footprint. Our main features include illuminated common areas, rainwater harvesting, state-of-the-art elevators, trending fittings and spacious house plans.

Our strengths are to complete all projects with all permissions and hand over peaceful possession to our esteemed clients.





# Saffron

Saffron, Plot No. 146, Dr. M.B. Raut Road, Shivaji Park, Dadar(W), Mumbai- 400028.



 Train  
 Metro

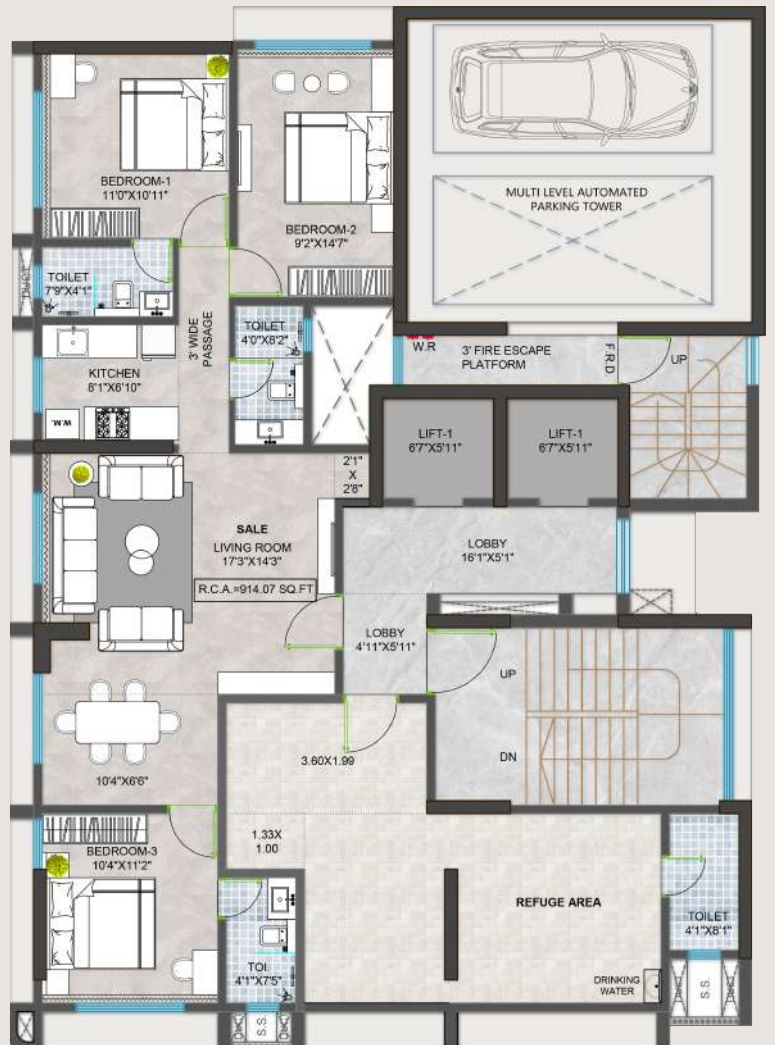
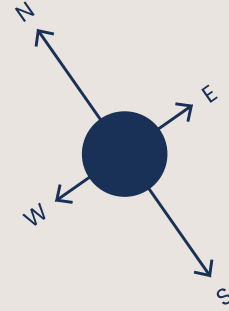
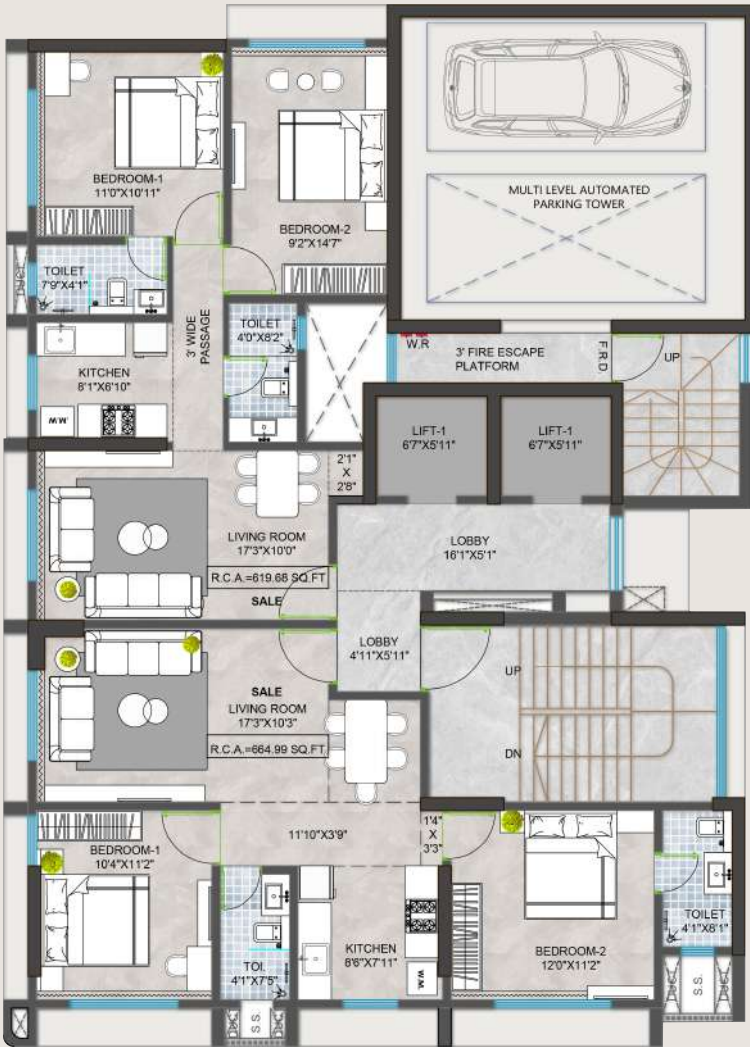


 **Walking Distance**

- Dadar Station . . . . . 13 min
- Dadar Metro Station . . . . . 10 min
- Matunga Road Station . . . . . 15 min
- Sittladevi Metro Station . . . . . 13 min
- Sittladevi Temple . . . . . 10 min
- Victoria Church . . . . . 13 min
- Bombay Scottish School . . . . . 10 min
- Balmohan Vidyamandir . . . . . 8 min
- Beach . . . . . 2 min
- Narali Baug . . . . . 10 min
- Citylight Cinema . . . . . 6 min
- Starcity Theatre . . . . . 7 min
- Kohinoor Square . . . . . 10 min
- MGM Swimming Pool . . . . . 6 min

# 2 BHK

Floor Plan  
Typical  
(2 BHK+ 2 BHK)

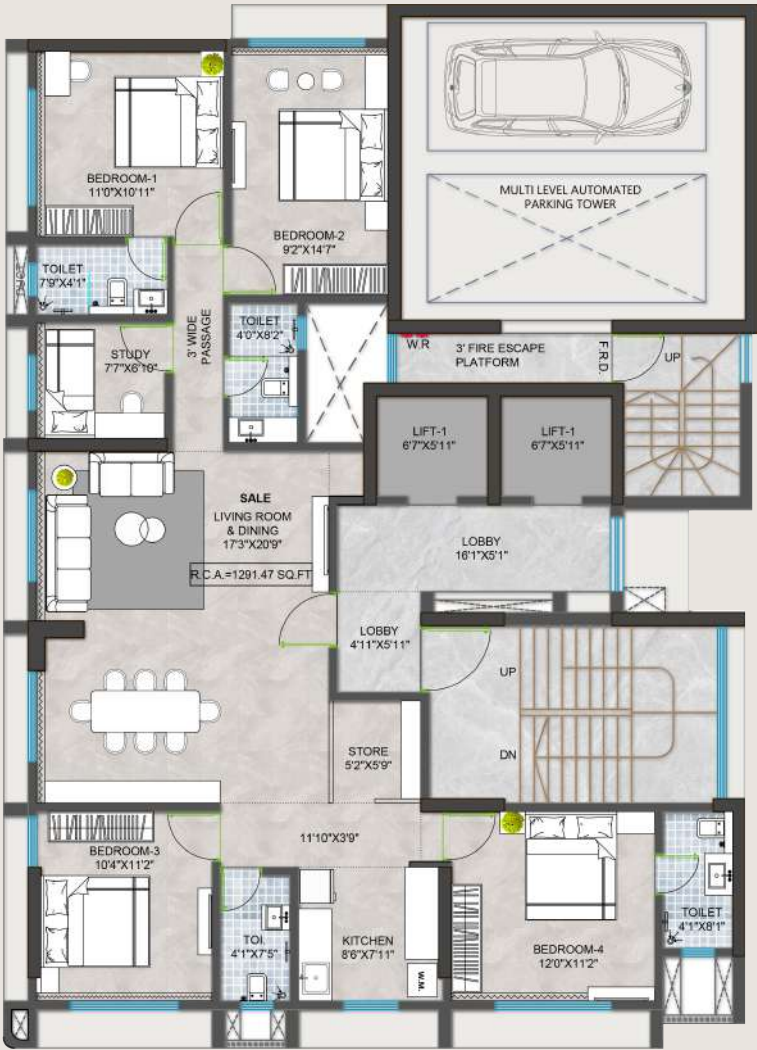
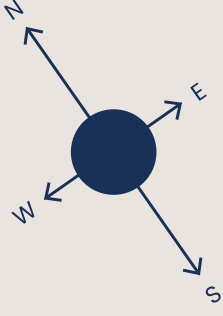


# 3 BHK

Floor Plan  
Typical

Note : Areas mentioned in plans are to be measured from walls in unfinished condition i.e. without plaster & claddings

# Luxurious 3 BHK Floor Plan Conceptual



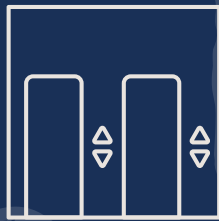
# Luxurious 4 BHK Floor Plan Conceptual

Note : Areas mentioned in plans are to be measured from walls in unfinished condition i.e. without plaster & claddings



Buildarch is a real estate development and redevelopment company which creates quality rehabilitation and housing.

Godshalwar Project Consultants & Developers (GP) is a property development firm which specializes in redevelopment projects in Mumbai.



Two Elevators



Double Height  
Entrance Lobby



CCTV Security



Sufficient  
Parking



Aluminum  
Windows



Beautiful Elevation

1200+

Happy Families

65+

Years of Experience

7 Lakh+

Lakh Sq Ft in  
Prime Locations

60+

Developments and  
Redevelopment Projects



Saffron, Plot No. 146,  
Dr. M.B. Raut Road,  
Shivaji Park, Dadar(W),  
Mumbai - 400028.

## **Buildarch Land Developers Pvt. Limited**

 Sales: +91 - 9819011115

 022 - 24445010 / 24445011


 sales@buildarch.biz


 buildarch.biz

Address:

101 Sankalp, S.H. Paralkar Marg,  
Shivaji Park, Dadar (West),  
Mumbai - 400028

## **Godshalwar Project Consultants & Developers**

 Sales: +91 - 9870839081

 022 - 24473000/24473001

 gpdevelopers.co.in

Address:

001, Shree Apartments, Gr. Floor,  
Dr. M. B. Raut road, Shivaji Park,  
Dadar (West), Mumbai - 400028



Legal Disclaimer:

This brochure is for private circulation & viewing only. It is not for general public and should not be construed as an advertisement or an offer to sell or book as stated under RERA Act. The information, images, visuals, drawings, plans, sketches, specifications and amenities shown in this brochure are an architect's impression and are only indicative of the envisaged redevelopment; the same are subject to approvals from the planning authorities. The Developer / Promoter reserves right to make amendments therein as and when it deems fit and proper.